

Conjunction

Linking staff, students and friends of API(UK) around the world
www.api-uk.org

ARE YOU IN YOUR ELEMENT? *Principal's Notes by Joyce Hopewell*

If, like me, you tend to see things through an astrological lens, perhaps these brightly coloured beach huts will bring to mind the colours used in Huber charts for the Zodiac Signs. But which one of the cabins grabs your attention? Which colour are you drawn to? Which one would you choose for yourself? Would it be fiery red, earthy green, airy yellow or watery blue? And would that relate to your Sun Sign, AC Sign or the highest number of planets in that particular element in your chart? With 4 planets in Air, my eyes flew to the yellow hut – that's the one I'd have!

This, of course, is just a bit of light-hearted astrological fun, but it can be taken to a deeper level if we consider which of the four elements we feel most at home in. Are you a fiery initiator, most at home when involved in enthusing, pioneering and moving things along? Or do you prefer a steadier existence, focussing on the realm of substance and form as you work with the earthy practicalities of life? Maybe you prefer the headier, airy realm of ideas, finding that this is what you're drawn to (although you might have to be careful not to become a superficial airhead along the way!) Perhaps your sensitive and emotional side is emphasised and you yearn to be close to water, it's ceaseless fluidity and movement offering something you can relate to from deep inside.

The poet e.e.cummings wrote about four girls who went down to the beach to play. Each found something special – a shell that sang, a stranded star, a sea creature, a smooth round stone. He plays with the idea of the four elements in the imagery used in the poem. The closing line – one that may offer food for thought – is “For whatever we lose (like a you or a me) it's always ourselves we find in the sea”.

Using the astrological lens, this phrase might remind us of watery Pisces, symbolic of vast unfathomable oceans. Louise Huber says that in this sign “we long for an end, for peace and quiet, for a ‘country that speaks our language’, for a divine home”, where we may indeed rediscover our true essence, and “find ourselves in the sea”.

maggie and milly and molly and may by e.e.cummings
Reflections and Meditations on the Signs of the Zodiac
by Louise Huber



Beach Huts at Southwold by Maylis Curie

In this Issue:

Editor's Welcome	3
INFORMATION FOR STUDENTS	
Contacting API Staff	2
Why aren't you using your Student Rep?	2
Study Groups.	2
Maggie's Talking Point	3
Workshops for 2007.	16
Counselling Qualifications and the Diploma in Astrological Psychology	17
Software News	18-19
Conjunction Digest, a Study Resource	16
FACE TO FACE: October 2006.	17

ARTICLES & CHART INTERPRETATIONS

A View at the Top <i>by Maria Maw</i>	4-5
The Planets - A Gala Performance <i>by Elise Kennedy</i>	5-6
Astrological Counselling and the Three Levels of Consciousness, <i>by Jeremy Cooper</i>	7-8
Condoleeza Rice - An Essay in Scorpio <i>by the Cheshire Study Group</i>	9-10
Astrological Coaching? <i>by Maggie Jeffery</i>	14
Wassily Kandinsky: Colour, Shape and the Symphony of the Soul <i>by Sue Lewis</i>	15-16
Aspect Patterns: The Efficiency Triangle.	18-19
BOOK NEWS & REVIEWS	10-13





Contact Us:
telephone
& email

Principal

Joyce Hopewell
01565-633829

api.principal@zen.co.uk

Student Administration

David Kerr
01896-848928

david@djm Kerr.wanadoo.co.uk

Enquiries & Membership

Elly Gibbs
0151-605-0039

api.enquiries@btopenworld.com

Student Representative

Maggie Jeffery
01837-52081

maggiejeffery2@hotmail.co.uk

Principal Emeritus & API Chart Data Service

Richard Llewellyn
0151-606-8551

r.llewellyn@btinternet.com

API Treasurer

Sue Parker
01492513924

suelysfaen@talktalk.net

Bookshop

Linda Tinsley
01704 544652

lucindatinsley@tiscali.co.uk

Publicity

Andrew Duncan
astropub2@aol.com
01896-752663

Publishing

Barry Hopewell
01565-633829

barry.hopewell@zen.co.uk

API Web Master

Jane Brooks
0161-221-2224

jane@api-uk.org

Workshop Programme & 'Face to Face' 2006

Jane Brooks
0161-221-2224

jane@api-uk.org

Computer Software

Elly Gibbs
0151-605-0039

software.api@btinternet.com

Conjunction Editor

Sara Inkster
0161 225 7427

07976 209556

sara.inkster@ntlworld.com

SCHOOL NEWS

Why aren't you using your Student Rep?

Your Student Representative, Maggie Jeffery, is feeling under-used and forgotten! She is a Diploma course student and the API (UK) Council Member responsible for representing the views of you, the students. But to date she hasn't heard from very many of you – and she'd like to!

Could this be because you are perfectly, 100% happy about everything relating to your course? If so, this is wonderful news and something to share with Maggie so that she can pass it on to the Council! But maybe there are some lurking niggles, or suggestions for improvement you might have but you've not bothered to mention them to anyone? If there are, and your Council knows nothing about them, there is no way we can do anything to improve things.

Maggie would like to hear from you if there is something you are happy, or maybe not so happy about, so that we can either celebrate, or take action to improve things.

Don't forget Maggie is there for you! Her contact details are:

Maggie Jeffery

23 Wharfedale, Thornbury, BRISTOL, BS35 2DS

Tel: 01454-413535

maggiejeffery2@hotmail.co.uk

STUDY GROUPS

THE CHESHIRE STUDY GROUP

A study group for the Cheshire and Manchester area. Meetings are held on or around the Full Moon every month, except during the Christmas/New Year period. The group meets between 7.30 and 10pm at members' houses on a rota. Members can book 'slots' in advance to cover a topic of their choice, for example a current assignment or a particular chart. We welcome all Huber astrologers and students and anyone else interested in the way Astrological Psychology works. We usually try to include a Full Moon Meditation. The first two dates for 2007 are February 2nd and March 3rd. For more information please email: jane@api-uk.org

THE API LONDON GROUP *by Sue Lewis*

The group meets every month or so, for two and a half hours, on Saturday afternoons at 2pm in the winter months and Tuesdays at 7pm when the evenings are longer. It's an opportunity for students to get together, discuss charts and raise queries about the course, and is open to anyone interested in Huber astrology.

We meet at my flat in Battersea Park Road, which is on bus routes 49 and 345 from South Kensington, 319 from Sloane Square, 44 from Victoria and 344 from Vauxhall, and a 6-minute walk from Clapham Junction Station. There is street parking nearby after 4.30pm weekdays and at weekends. Usually 4 or 5 people come, and my flat will comfortably accommodate 8 so we would welcome a few more participants. There is a nominal charge of £2 to cover refreshments.

Provisional dates for forthcoming meetings in 2007 are: Saturdays 27 January and 3 March at 2pm; Tuesdays 3 April and 1 May at 7pm. These dates are close to the full Moons and we will start by doing Louise's full Moon meditations.

If you would like to join the group or happen to be in London and would like to come along to a meeting, please contact Sue Lewis on 07946 600304 or suelewis7@tiscali.co.uk

Visit the API website: www.api-uk.org

MAGGIE'S TALKING POINT *by Maggie Jeffery*

Hello everyone! For years now, the ideas of Margaret Newman (a Nurse Theorist) who writes about *Health as Expanding Consciousness* has fascinated me and I believe it is expansion of consciousness that we work with in astrological psychology. In particular, the power of our unconscious and how images rise to the surface never fails to amaze me. As I've worked through the course, this has been demonstrated time and again and often the full meaning and importance of the image has taken me years to understand.

For example, when I first looked at my Natal Chart, I was struck by the image of a baby in a pram gazing towards the Second House with the hood of the pram facing the Eighth House and shielding the baby from the "Conscious You" side of the Chart. It has taken me years to work this one out and I only gained some understand of it when I reached Lesson 21. Working with the Moon Node Chart gave me an understanding of the Shadow side, that part of our personality that is hidden from us. This has helped another piece of the jigsaw to fall into place – but I still don't think I've got the full picture and it's taken years for me to get this far!

Another example was when attending a Mask Workshop at Face to Face some years ago. Those of you who have done this workshop may know how powerful it can be. I chose to focus on Venus in Gemini right on the DC and Square Neptune in Virgo in the Ninth House. Thinking it would be a gentle, harmonious "encounter", I began happily making a pretty pink and blue mask. However as I worked I found myself getting more and more irritable and frustrated and by the end of the time was quite ready to throw an impatient temper tantrum in a very un-Venus like fashion! To top it all, I then found I was pulling strands of cotton wool across my mask to obscure it.

I reflected that actually, yes, I am not the most patient person in the world and yes, I do try to hide it from other people although I may be fuming impatiently inside. I also realised that the cotton wool might have had something to do with the Square to Neptune as it changed the outline (boundary) of the mask and lent a rather "opaque" and hidden quality to the mask, while the pink and blue has to do with my total ambivalence about everything!

Many people have written about the power of images and how our unconscious embodied wisdom speaks to us in this way. Perhaps it is only when the time is right and we are ready for more information, that what is hidden from us comes into consciousness.

At the moment, I'm also reading Carl Jung's book, *Man and his Symbols*. Not exactly bedtime reading and it was published many years ago. But it does have an interesting chapter at the end about "Science and the Unconscious" and sometimes I've found that reading it years after it was written means the science has moved on and this really can simplify complex concepts.

So although when I began the course, I didn't quite appreciate the power of the images we encounter when working with our Birth Chart in various ways, over the years such work has proven itself time and again – and doubtless will continue to do so!

Do tell me what you think; my Mercury thrives on feedback! Perhaps as a student there is something you'd like to share? Although I moved again (and again!) last year, my email address is still the same: maggiejeffery2@hotmail.co.uk

Have a wonderful 2007!

Maggie

WELCOME FROM THE EDITOR

Welcome everyone to my first issue of *Conjunction*. My thanks to Richard Llewellyn, the previous *Conjunction* Editor, who has really helped me to find my feet. I would also like to thank all the contributors and the API Council who have been so supportive. I have really enjoyed working on this issue, and as a student have found many of the articles really helpful to my studies – I hope you do too. I also hope you like the new masthead. It shows a conjunction of Venus with the Moon.

There are some great articles in this issue: on counselling and coaching, Age Points and Aspect Patterns, Kandinsky (spot the Talent Triangle!) and Condoleeza and much more besides. Book news includes the new Huber Book *Astrology and the Seven Rays*, which is available from the API (UK) Bookshop.

The API (UK) community is truly an international one and already I have met and been contacted by students and astrologers from as far afield as Norway, Brazil and Africa. I would love to hear from more overseas readers. For the next issue I would also like to have more on aspect patterns, particularly the QUADRILATERAL ASPECTS, and it would be great to have a focus on AGE POINT which is so particularly Huber. Articles, Huber interpretations, news and pictures will all be considered for publication and would be most welcome. Contact details on page 2. So, until the next issue, happy reading!

Sara Inkster

NEW SOFTWARE FOR HUBER STUDENTS

Juan Saba, our software designer, has produced a new program that gives students on the Diploma Course all the facilities they need to draw charts without going to the expense of purchasing Astrocora or MegaStar. The program, which has full User Instructions, is called Regulus API (UK). It allows you to produce:

- The radix chart, data, age point and age progression.
- The House chart, data, and age progression.
- The Nodal chart, data, and age progression.
- The Family Model.
- Presentation Charts.

Costing £80 for a program disk, this is a SPECIAL OFFER ONLY FOR API (UK) STUDENTS. The disk must be purchased direct from API software in order to qualify for the discount price. A credit card facility is available.

New students will be offered the program at the start of their course. Existing students can order from API Software Distribution. P.O.Box 29, Upton, Wirral, CH49 3BG, England. email: software.api@btinternet.com. telephone 0151-605-0039.

Non-students can purchase the program from the Cathar website, www.catharsoftware.com.

A VIEW AT THE TOP *by Maria Maw*

One of the things I find frustrating about being an astrologer is being too young! This may sound an odd thing to say but it doesn't matter how old I get there are always people who are older than me who want to explore their birthcharts. I suppose a time will come when this group will become very very small. In the meantime I sometimes find myself in a situation where I'm attempting to describe the sort of experience one might expect from an Age Point transit of a house position that I haven't yet reached. I might be lucky, and be able to give a general description based on how a previous 'client' had described their experience of a similar feature. However, if I haven't come across the situation in real life it doesn't matter how good my recall is of whatever I've read about it in a book I can only give the crudest of explanations as to how it might feel. My personal experience has been that this particularly applies to the AP transits of the Descendent (DC), Inverse Point 8th house and the Midheaven (MC) at age 36, 45-47 and 54 respectively. These are key stages in people's lives and will often promote a visit to an astrologer.

Maria Maw 11.3.1957 5am Croydon UK



Well I've passed two of these milestones and it's uncanny how as I've passed through them I seem to have attracted a disproportionate number of people of similar ages seeking astrological counselling. I've got 4 years to go to the MC but already I'm seeing more than an average number of people approaching the MC. Of all the houses I've found the 10th and particularly an experience of the MC to be the most elusive. Maybe because my Saturn sits in the 10th I've seen it as a bit of a daunting place. I've found myself describing the MC on various occasions as the 'peak of personal expression', 'what we've aspired to', 'the highest point of individuation' but really what do these mean? I felt as if I were waffling; I couldn't find an experience in myself that I could relate them to and none of my clients were describing any experiences that seemed to relate to these expressions.

But this has changed for me in the past few months. Because it has been such a revelation, and people I'm talking to and sharing ideas with who are transiting or approaching their MC are resonating with these experiences, I thought I'd share my insights with all of you pre-50ish who may also have found the significance of the 10th house out of your grasp.

We know from studying birthcharts that each individual is unique and by carefully exploring the birthchart with

someone it's always infinitely fascinating to hear about their skills, passions and creativity. Often, depending on age and life circumstances, people may talk about something they were passionate about once but was then put aside. Or, they may be surprised to find that a dream or an ambition they'd secretly put away is clearly indicated in their chart. This can suddenly give it new life, make the possibility of it real and bring about its expression. However it comes out, if a 'client' is willing to talk about themselves they will invariably reveal something which is a special gift. It may be a quality or a skill, represented by a planet, group of planets, or even the aspect structure itself. Personally I feel that as astrologers this is one of the greatest delights that we can help another person to discover. You can usually tell when it's being described because the 'client' will often appear to 'light up' or become more animated; I see this as literally their place of enlightenment and inspiration. It could be described as their God-given gift; I see it as the spark of 'genius' that every single one of us has in some disguise. It's what makes us uniquely different to nearly everyone we meet. Obviously there may be other people who are 'better' than you at Maths but if it's Maths that lights your fire it is likely that you will be more able at it than the vast majority of people you know.

What's equally illuminating is the number of people who having become lit up about something don't know that this makes them special and unique. They just think that everyone can think/feel/do/communicate whatever it is. It can be very liberating for them to discover that they not only have a special talent but it can go a long way to explain why no one else understands something that seems so obvious to them.

As humans we share about 99.999% of our DNA, we all feel pain, sadness, fear, love, hunger; there are a million expressions of what makes us human that we share and unite us. This is our collective experience and is represented by the Immum Coeli (IC). The experience of what makes us each an individual, unique, separate to most other people we know, stand out from the crowd, 'our personal gift' is represented by the MC, the 'point of individuation/individuality'. Some people will have planets on or very close to the MC which can be useful indicators of particular gifts, but for those of us with nothing to highlight the MC these gifts need to be sought elsewhere in the chart.

How to identify those gifts is another story. What I'm interested in is the process by which our 'special gift' develops and matures into a unique and individual contribution to the evolution of consciousness and what point the MC marks in this process. Obviously the journey of discovering our 'self' begins at birth with the first cardinal cross, the AC, represented by Aries. We emerge into the material world and begin the process of self-awareness with respect to our own body and immediate environment. At the next cardinal point (Cancer), the IC, age 18, we leave the familiar surroundings of school and possibly home and become immersed in our interactions with the wider environment. We begin the process of self-awareness in relation to the big world. Ask anyone approaching the MC about their special gifts and talents and they will find the roots of these abilities were first emerging as special interests and

dreams before age 18. Computers may not have been around then, or in my case complementary therapies, but the techno adult may have been very interested in information as a child and I was passionate about wildflowers from the age of about 6. Bruno Huber used to say 'pay attention to what the 9/10yr old (Balance Point 2nd house) says that they want to do with their life'.

Another 18 years and we reach the 3rd cardinal point, the DC (Libra). This is a very significant transition as it marks the emergence from the lower / unconscious hemisphere of the chart into the upper / conscious realm. However, as age 36 and 54 don't have any obvious significance in our culture these marker points reflect transitions which although equally important as birth and age 18 are not celebrated and highlighted. My experience is that unless these AP transits also aspect planets they can go by largely unnoticed. It is our responsibility to point out to 'clients' (and family and friends) the importance of these milestones so that they may become more self-aware. At age 36 it's as if we emerge out of a subterranean world into the daylight. Our 'vision' changes from subjective to objective; we 'see' the world from a different perspective, moving towards an overview rather than an I-centred awareness. This changes the dynamics of our relationships and develops a new level of self-awareness

in relation to others. The final cardinal point brings us to the MC (Capricorn).

It's interesting to note that if we survive past 72 then we move back over the AC. It's fascinating to observe how people in their 70's seem to enter a second childhood and another turn of the self-awareness spiral begins. Age 90 takes you past the IC again. I met two elderly ladies in their very late 80's in a 'retro' clothes shop yesterday reminiscing on their 20's and the clothes they used to wear and rediscovering their desire to wear clothes that made them stand out from the crowd. One bought a highly sequined top for Christmas. I've not met anyone who's made a second transit of the DC, age 108, but I did used to live in remote Snowdonia next door to a gentleman who made it to 102. He almost willed himself to die although he was very well and had been quite content surrounded by his family, but he could see that his future was unlikely to bring the lively exchange and banter of other intellectuals that he was feeling the need for and always remembered from his past, working and contributing to life in the city. TV and family visits just didn't satisfy it. He would have made a great 'elder' in a less youth-orientated society. He had so much experience and stories to share.

I propose we introduce very special birthday status to ages 36, 54, 72 and 90. Is there anyone in API gifted at making birthday cards?

GALA PERFORMANCE *by Elise Kennedy*

Each of the Planets had written a book and were invited to present their works at a Gala TV show. That evening, as they made their way to the studio, an intense rain fell. Luckily there would be time for them to change into a set of clothes set aside by the Wardrobe Department.

In came Venus, she had called a cab to avoid getting wet, and brought grapes and daffodils as gifts for her dripping fellow authors. Her book, *Artistic Patrons of Venice*, was safely stored in a beautiful jeweled bag – she was going to a party afterwards.

The doors swung open vigorously. "We need to get this show on the road", Mars said "and get these wet things off right now!" Saturn, looking rather alarmed, ushered him into a changing room. Mars marched in, throwing his book *My Power* (about the creation and destruction of a dynasty, and a transcendent hero figure) at the nearest person as he did so.

Mercury darted in out of the rain. He was talking excitedly in French on his cell-phone whilst fishing in his bag for an anti-damp remedy. "I tried to get up here another way", he said brightly, "By rope swing from the Armenian Embassy, but it only works on Wednesdays". He offered to read a passage from his *Treatise on Truly Inspirational and Original Concepts*.

Slowly, the door creaked open. It was Saturn returning. He carefully collected everyone's discarded wet clothing. Time seemed to pass more slowly now that Saturn had come back, yet everyone felt a bit wiser under his uncompromising stare. His book *Self Discipline* was rather boring.

Dripping wet and sighing loudly, Moon slipped through the door. "Ooh I'm wet, I shall need someone to help me get out of my coat", she said rather dramatically.

Moon was very wet indeed and everyone's sympathy immediately made her feel better. She looked quickly in the mir-

ror – for without reflection she couldn't remember who she was very clearly. Moon looked lovingly on the company, before checking to see whether her book *Soul-Force – Purifying the Emotions* was not too damp.

Jupiter strode through the doorway beaming broadly and beneficently. Leaning on his staff, he cast a rather lingering look at Venus. "What a grand studio we have here! He said. "I do hope we shall have fun, this is a real chance to expand our horizons". His deep voice held a hopeful note. "I have come a very long way", he continued. No-one was surprised. "I feel moved to treat everyone to dinner after the show," he added generously. Whereupon, he cheerfully showed the others his book *Prosperity, Growth and Meaningful Self-Development*.

There was a feeling in the room that someone were missing. Someone who could, as it were, mobilize them all. The Sun walked in! A warm glow spread through the company in the light of his virile presence. "In my opinion" he said, when told about the imminent change of clothing (his had dried out very quickly) "we need to check whether we are living in accordance with our intrinsic nature or according to the opinions of others. We should all choose and decide freely, which outfits will lend us the greatest integrity." Moon smiled in agreement, as she glanced at Sun's book *Believing in Myself, by Sun*.

By now seven of the planets had arrived. Where were the other three? Well, they had much further to come. Or was it that they had been there all along, but no-one had seen them?

"Hi everyone" called Uranus. "I just got a flash that you would all be here. Not being a fan of TV for the masses, I nearly called it off. Then I thought there might be enough individualized souls watching by mistake, who are working towards a conscious connection with the Source of Life."

“Uranus seems rather unconventional“, remarked Saturn to no-one in particular. Uranus did indeed look a little nervous and eccentric. “Any wrongs to be righted here? Conditions to be improved?” he asked hopefully. “All can be changed at one stroke – Vive la Revolution.” he urged.

“Let’s see your book,” said Venus, kindly. “All on a CD.” said Uranus, nonchalantly, “it’s called *Humanitarian Anarchy and the Sixth Sense*.”

“I see”, said Venus, who didn’t really.

“No reason to feel traumatized”, said Pluto, entering suddenly. Being near Pluto, everyone began to feel different. Moon wondered if Jupiter was a megalomaniac. Venus thought perhaps she’d made a mistake in coming tonight. Mars wanted to call his mother and Mercury experienced a sudden onrush of destabilising uncertainty. Only Sun knew what to do – perfect himself and become aligned with evolutionary goals.

“It’s all about metamorphosis” said Sun, as he blew with his warm breath on Pluto’s book: *It’s My reGeneration*.

“Where’s Neptune?” said Moon.

“Well, you know how Neptune is”, said Saturn “He’s taken apart a lot of the work that I’ve spent a long time on. Besides, he doesn’t like hard work, perhaps he isn’t coming?”

“He’s here ... Come in Neptune”, said Venus warmly. “I think we’ve met before. At the ballet, wasn’t it?”

“Or Alcoholics Anonymous”, said Saturn gloomily.

Mars, who had about enough of this, told everyone to hurry up and choose an outfit to wear. He seized on a glorious knight’s costume, with a fierce looking coat of arms. He wanted to take a battering ram in with him, but was told not – it wasn’t finished. It wasn’t easy for him to take orders from other people, and he decided to finish it himself, right there. The label for this costume was a full moon with a crescent attached to it. Of course, Moon liked the label a lot.

Venus quite liked the tasteful, yet practical, soft, green gown with beautiful pearl trim. “Don’t rush me”, she said stubbornly to Mars who said it would look great on her. She was imagining wearing it to her next visit to a very superior garden centre.

“Check out the cool labels!” exclaimed Mercury as he grabbed at a curious-looking garment in a lightweight butterfly print. Covered with shining badges it had a logo of the Roman numeral two. “No, on second thoughts, I don’t want this one! I like this one”. It was a rather silly, stretchy, striped suit. It came with a travel bag, packed with guidebooks and dictionaries “Very versatile indeed”, he felt compelled to tell people.

Moon felt the fabric of a deep blue dress with a rhythmic pattern and hood for privacy. It had lots of practical pockets. Nothing too obvious. It reminded her of her grandmother – such a useful garment for someone with a family. Moon loved the yin-yang logo on the sleeve. Just the sort of dress for wearing while she did her favourite community work.

Sun absolutely had to have the noble Phoenician trader’s costume in heavily embroidered velvet with a swirly curly logo sewn in gold. It was slightly cumbersome, but looked so very grand, and set off his handsome features. Yes – he could see himself on stage already, surveying the audience below him.

The next outfit included a pair of perfectly shiny shoes. A meticulous and tastefully modest suit. Mercury cast his eye on this one too, he liked the coiled logo. He could see another side of himself in this suit, calmly organizing everyone and pitching in where someone else had neglected their duty.

Venus awoke from her garden-center reverie and noticed an outfit that was both charming and romantic, with a sun logo. A perfect party dress, graceful, refined and artistic. How nice to meet people, perhaps even her perfect partner, in such a dress. Though she wasn’t sure – would it perhaps upset someone like Mars, whose courage she admired. Might he find it too soft – lacking character?

Both Pluto and Mars took to the tight snakeskin suit. It came with a mask. The logo was a really cool-looking scorpion with a barbed tail. Pluto took it, because he liked the worry beads and the forensics manual, which he found in the pocket. He also liked the rugged look it gave him. Whoever wore this was going to look rather inscrutable.

Jupiter had to find something big enough for him. There it was. A straightforward, bold and jolly sort of costume. He loved the designer label – an arrow with the words “arrow of aspiration” below it. Something of a philosopher’s gown, with an air of adventure and discovery.

Saturn was drawn to a very practical-looking climbers outfit. It came with a bag full of utensils, a compass, first-aid kit and replacement shoelaces. The whole thing seemed to reflect the self-discipline on which he prided himself. A small sea-goat was sewn neatly on the collar. However, he would not rush into a choice until he had really considered carefully.

Uranus didn’t care what anyone thought. He immediately picked the Bohemian costume with beads. It would help him embrace that experimental life-style that held such allure for him. It was the sort of thing one could wear comfortably to minority group meetings – a sort of Utopia Gown. He particularly liked the design with the two waves on the back.

A pale gown, with a slippery feel and mystic appeal had a behind-the-scenes unobtrusiveness: Neptune had been a little uncertain which to choose, and hadn’t wanted to take something another planet might enjoy. He liked the logo – two fish swimming different ways. Neptune almost picked it, then sensed that perhaps he shouldn’t, when Saturn made an announcement. It seemed they were not to choose the clothing themselves, Higher Management had already allocated each planet an outfit for reasons it chose not to divulge, although anyone who was really interested in finding out, was welcome to try.

Mercury laughed uproariously at the idea of Saturn trying to look serious in that ridiculous snakeskin suit. At the same time he prayed: “Dear God, let me not be condemned to wear that ostentatious gown with those awful arrows”.

Mars was sure nobody was going to tell *him* what to wear: what dishonour and idiocy to be broadcast nationwide in a romantic party dress! Venus felt she would feel quite uncomfortable and not at her best at all, clanking around in the knight’s outfit, and wondered what Mars would actually look like trying to strut about in the blue dress with the hood and all the pockets and the memory of someone’s grandmother.

The planets turned to their leaders. “What shall we do?” they asked.

Sun knew, whatever happened, things would be OK, as long as he believed in himself. Higher Management had its reasons.

Moon realized that it was important to keep one’s balance in the wake of these little upsets.

Saturn realized he need not depend on such things as physical appearance for security, and was thus resigned to his fate.

Elise Kennedy recently completed the Intermediate Course She is a watercolorist and currently lives in the Northern United States

ASTROLOGICAL COUNSELLING

and the Three Levels of Consciousness *by Jeremy Cooper*

Here I investigate more deeply the question beginning with “Where?”. For we, as astrological counsellors, not only ask outwardly of the client where they are in life, but also ask inwardly of ourselves: “Where is this client’s mind in relation to the three levels of consciousness?”

Knowing where the client’s mind is in terms of the three levels of consciousness changes our whole approach and level of interpretation. Also the level of consciousness at which the client is living determines the Why, How, What, Where and When of their future experiences.

In the API Diploma Course three levels of consciousness are discussed:

AWAKE	the super-conscious or transpersonal level
WAKING	the conscious or ego level
ASLEEP	the sub-conscious or life support level

My understanding and experience is that one level tends to predominate, and, as such, clients will perceive the world in different ways. Therefore their experiences in the world and their behaviours will be different. Although they have the same birth chart and live in the same world, they can be seen as three different kinds of people. Or, of course, the same person with three different ways of living.

The Levels of Consciousness

Since completing the Diploma Course I have come to the opinion that all three levels are characterised to some degree by the influence and power of the ego; at the Asleep level by directing energy for one’s own benefit, at the Awake level by directing energy for another’s or a group’s benefit, and at the Awakening level choosing the direction as appropriate. It can be said that at the Awake level one is free of ego involvement, but my present understanding is that one is awake to the realization that the ego’s strategy of having us believe that we are separate beings, is an illusion. In fact the ego may truly rejoice and encourage the person in “going transpersonal”, the Awake level, because by following that strategy it thinks that it might benefit, such as by bringing fame and fortune. Which is not to say that there are moments when a person might experience a pure transpersonal state at the Awake level without any ego involvement. Of course they do.

In the Asleep and Waking levels the ego’s influence is to produce a state of mind where we appear to exist as separate beings. The characteristics of such a world are impermanence, imperfection, unsatisfactoriness and uncertainty. At the Awake level there is an awareness that we are not separate beings, and that the well-being of others is more important than that of self.

Beyond the influence of the illusory ego we have an opportunity to accept and be open to our true nature, which is called by many names in different faith traditions—here I choose to call it Unity Consciousness. Astrology can take us to this stage, to the doorway of the heart—but it cannot take us beyond.

Awareness at the Asleep, Waking and Awake levels is focused mainly through the planets, they being the interface between

our inner nature (the Signs) and our outer conditioning (the Houses). Awareness at the Unity Consciousness level is focused in the centre of the charts.



UNITY CONSCIOUSNESS

Buddha-like nature. Awareness through a radical shift in perception from separateness to Oneness

AWAKE (GROUP CONSCIOUSNESS)

Superhuman-like nature and identification with the belief of Oneness. Perceiving through INTUITING. Awareness focused through the transpersonal, tool and ego planets at the Awake level,

WAKING (GROUP AND EGO-CONSCIOUSNESS)

Human-like nature and identification with the belief of Separateness and Oneness. Perceiving through INTELLECT choosing where to focus awareness through the planets at all levels.

ASLEEP (EGO CONSCIOUSNESS)

Animal-like nature and identification with the belief of separateness. Perceiving through INSTINCT. Awareness centred in the Ego, Tool and Transpersonal planets at Asleep level

Astrology is relevant at all these levels of consciousness

Asleep level of Consciousness

At this level a person perceives the world from a belief in Separation. Problems arise for a person living at this level because they react to life’s difficulties by directing energy purely for their own benefit, or by reacting negatively through fear, ignorance, greed and/or anger. Such interactions which are focused on an “I win—you lose” solution tend to cause conflicts and wars, and are perceived by a person living at this level as a crisis.

Deep down people living at this level may be desperately unhappy, perhaps suffering with a mental, emotional or physical illness. They may believe that they have no control over their lives, and may consider themselves to be victims of their circumstances. But on the surface they may think that they are happy and come to identify with this adapted and false self, and so be in denial both of their inner feelings and people living at this level of consciousness perceive the world mainly through instinct, and are driven by fear, and may live by the mantra “I want food and territory, sex and sleep” or “I’m in pain, I’m suffering”.

Patience is a healing virtue at this level.

Waking level of Consciousness

At this level a person perceives the world both from a belief of separation, ego consciousness; and an awakening to the needs of others, that is to group consciousness. The tension of living the duality between self and others, and of Awake and Asleep, ego consciousness and group consciousness, love and fear may eventually lead to asking questions such as, “What is it that will truly make me happy?” “Who am I?” “What is my purpose?”

It is in sincerely asking these questions that a person may become motivated to begin a spiritual search. And so this level of consciousness may be considered to be the best one for spiritual advancement – that is to awaken to Unity Consciousness. Living at the Awake level of consciousness, may sound really attractive, yet living as we do at the Waking level is infinitely more precious and practical. This is because the suffering of being in perpetual predicament of dualities which is brought to a head from time to time in all of our lives, is the very opportunity for spiritual transformation. By that I mean that it offers the best opportunity to pierce through these illusory three states of mind and ego consciousness, into a deeper knowing and awareness of who we truly are. An opportunity to fulfil our inner purpose of living at the “highest” level of consciousness, and to which the whole motion of the birth chart is impelling us.

People living at this level of consciousness perceive the world mainly through their intellect, and are driven by both love and fear, as well as by desire, which only intensifies the tension on the dualities, and a feeling of dissatisfaction. They live by the mantra: “I don’t want this – I want that”

Non-attachment is a healing virtue at this level.

Awake level of Consciousness

At this level a person perceives the world from a belief in Oneness. Problems tend not to arise for a person living at this level because they react to life’s difficulties by directing energy for the benefit of others. Such interactions which are focused on a “You Win–You win” or “You Win–I Win” outcome tend to be peaceable, and are perceived by a person living at this level as an opportunity. That is an opportunity for the soul to mature and deepen the development of transpersonal qualities.

One of the characteristics of this level may be that it is devoid of suffering, as these people may insulate themselves from the harsh realities of the world or they may not confront painful situations. There may be little reason for them to look beyond their comfortable existence and to undertake further spiritual study, and may be lulled into a mind of complacency and pride. For pride prevents us from asking, and in not asking we may be closed to listening (to the voice of our Higher Self)

People living at this level of consciousness perceive the world mainly through their intuition, and are driven by love and faith, perhaps living by the mantra “I’ve got everything that I want; there’s nothing more I need.” And opening to the mantra; “Thy will not mine”

True humility and sympathetic joy are healing virtues at his level.

Unity Consciousness

It is important to realize that this level of consciousness is not to be achieved for we already are in Unity Consciousness,

that is in a sacred union with the God of our understanding. It is just a simple matter of clearing the obstacles to this realization, and acceptance of what always has been and is. Of stopping and being still. For slowing down our activity in the world speeds up our vibration spiritually, and we come to rest our awareness in freedom and peace at the centre of the chart. Here there is a recognition that we are not our body, thoughts and feelings, that we are not a separate individual, there never was an ego, and that the birth chart is simply a symbolic picture of who we think that we are. We made it all up!

People who manifest at this level are characterised by their happiness in them selves and with others, and the way that they perceive with clarity the world as being inherently perfect, seeing beyond behaviours to perceive the God and Good in each person.

Where are YOU as an astrological counsellor?

It is so imperative to be clear about your own motivation, and your level of consciousness, for you as astrological counsellors are the clear mirror through which the client will come to know themselves. The more healed, whole (or holy) and centred that you are, so the more healed the client will become. Conversely if on that day you are asleep and based in ego—and we all go here from time to time!—then don’t go anywhere near the client! And of course be totally non-judgemental of yourself and the client!

Two acronyms for YOU ...

LOVE =

Lots Of Vital Energy

FEAR =

False Evidence Appearing Real or
Forget Everything And Run

This article is based on the *API (UK) Diploma Course Module 3.2 and Modules 8.1 and 8.2*, and sections of the books, *Aspect Pattern Astrology and Cosmic Egg Timer*, and represents my personal understanding of these concepts at this time.

“The truth of who you are is already awake, already free, already pure, already beautiful and whole and in love with itself. And in surrendering to the truth of yourself, you find yourself in everyone and everything.”

— *Gangaji*



Jeremy holds a Swiss Diploma and is a school tutor. He can indulge his love of the countryside and walking by living partly in the Lake District and partly in Devon. He can be contacted at: crystalmountain@tiscali.co.uk

CONDOLEEZA RICE

An Essay in Scorpio

by the Cheshire Study Group

BIRTH DATA

From Lois Rodden's Astro Data Bank

14 November 1954, 11.30 am CST (+6.00), Birmingham, AL

33N31 86W48 AC 3AQ08

Dr. Condoleeza Rice became the United States' 66th Secretary of State in January 2005. The Cheshire Huber Group looked at her chart during their meeting in September 2006.

Looking at Condoleeza's chart during a meeting of the Cheshire Huber Group provoked a lively discussion and yet, when we came to write it up, the chart seemed to become impenetrable.

We're part of the public audience that Condoleeza meets through her MC and her 10th house and it's here that we find the cuspal Sun/Venus conjunction in Scorpio demanding our attention but perhaps preventing us from getting too close. Condoleeza has four planets in Scorpio, a total of seven in water signs and, excepting two transpersonal planets, has only the tool planet Mars in another element – airy Aquarius. Interesting that with her 1st house Aquarian Mars squaring Saturn in fixed Scorpio, conjunct the planets at the MC, Condoleeza believes “promoting freedom is the only realistic path to security”. Condoleeza's chart shaping is dynamic and linear in motivation and, coupled with this 1st house Mars on a balance point in Aquarius and strong by sign, perhaps it's no accident that she chooses to quote Truman: “the world is not static, and the status quo is not sacred”.



With the Sun, Venus, Saturn conjunction at the top of the chart, it's fitting that Condoleeza has a reputation for making things happen with tenacity and charm. The power of her Venus in Scorpio is reflected in her being ranked as the most powerful woman in the world in 2004 and 2005, dropping to number two in 2006.



Her public persona is indeed an essay in Scorpio. One of her most significant initiatives is ‘transformational diplomacy’ – is this perhaps Pluto at work? It requires diplomats to serve some time in ‘hardship locations’ and any suggestion that diplomacy might be a Libran strength, once it meets Condoleeza's Scorpionic take on things, immediately acquires a sharper, more gritty edge. No negotiations over a leisurely game of golf, instead diplomats are asked to focus on problems like terrorism, drug trafficking and diseases – a Scorpionic agenda tackling head-on the issues that others might like to skirt around. Whilst Libran diplomacy might focus on “peace-making” and trying to achieve balance without conflict, this Scorpionic approach might accept that war might be required in order to destroy the deadwood and allow peace to bloom.

It could be proposed that Condoleeza's public image, bound up with the Sun and Saturn, might be influenced by her parents. Bearing in mind Scorpio's reputation, this is the challenge her father made in 1971: “When tomorrow comes will you be the perpetrators of war or of peace? Are you the generation to bring to America a lasting peace? Or did your brothers and sisters at Kent and Jackson State die in vain?”. She is also quoted on a BBC website as saying: “my parents had me absolutely convinced that, well, you may not be able to have a hamburger at Woolworths but you can be president of the United States”.

Scorpio can have a perfectionist streak and the ability to transform itself. As a young woman, Condoleeza started out with the goal of becoming a concert pianist. Although good, she realised she wouldn't be amongst the best and, at the time when the cold war flourished, she transformed her world by becoming an expert on the Soviet Union – a country characterised by secrecy and tyranny. Scorpio equates vulnerability with weakness and writing in 2005 Condoleeza says: “the phenomenon of weak and failing states is not new, but the danger they now pose is unparalleled ... Weak and failing states serve as global pathways that facilitate the spread of pandemics, the movement of criminals and terrorists, and the proliferation of the world's most dangerous weapons”. This reads as a Scorpionic manifesto for transformation of the world stage or as a means of legitimising a trait Bill Tierney describes as notorious in Scorpio, that of “trying to do unwanted makeovers on people [or countries], from head to toe, inside and out”.

It's interesting that despite the Scorpionic emphasis, Condoleeza's Pluto is somewhat blocked off from the centre of the chart, lurking on the ‘you’ side of her chart. Interesting

that she equates marginalisation with the darker forces of the world: “when the citizens ... cannot advance their interests and redress their grievances through an open political process, they retreat hopelessly into the shadows to be preyed upon by evil men with violent designs”.

Condoleeza’s chart has a predominance of planets in the upper hemisphere, with five planets in the 9th and 10th houses. Bruno and Louise Huber say of the upper hemisphere: “One thinks about the world and recognises clearly and surely one’s own position in it. This allows the possibility to create a place in society, because one knows how consciously to come in contact with the individual or that society”. Perhaps it’s no surprise looking at Condoleeza’s chart that she is a politician, however it may be interesting to note that the Hubers also say of an upper hemisphere dominance “there is the danger [of] ... living in an imagined world that does not correspond to reality”.

With a third quadrant and 9th house emphasis, how appropriate that Condoleeza is described as “the most academic of the Bush foreign affairs team” (she has a degree in political science, a masters degree and PhD, numerous honorary doctorates, spent six years as Stanford University’s Provost, is a professor of political science, has won respected teaching honours and has written a number of books and numerous articles). Condoleeza affectionately describes her parents as “education evangelists” – note the strong square between the Mercury/Neptune conjunction in the 9th house and the Jupiter/Uranus conjunction.

Condoleeza is the great-grand-daughter of slaves and her grandfather became a minister, setting the tone for the family’s powerful faith, self-reliance and drive to learn. It’s interesting to note the 2nd house emphasis in Condoleeza’s nodal chart – a knowledge that self-worth and possessions are important to secure strong foundations in life. This reinforces Condoleeza’s natal Moon in Cancer in the 6th house – protecting the homeland is all in a day’s work.

In conclusion, perhaps it’s no wonder that with such a Scorpionic influence, Condoleeza doesn’t reveal what she doesn’t want to world to see. She comes across as driven, having tremendous focus and always in the iron grip of self-control. With a Scorpionic interest in the transformation of society, Condoleeza appears to have little interest in superficialities, preferring subjects that people might find uncomfortable to explore – terrorism, Iraq, Cuba, the Israel-Lebanon conflict to name but a few.

References:

- Huber, B. & L. (1978) *The Astrological Houses* Weiser
Tierney, B. (2001) *All Around The Zodiac* Llewellyn Publications
<http://news.bbc.co.uk>
<http://www.astrodatabank.com>
<http://www.washingtonpost.com>
<http://en.wikipedia.org>

BOOK NEWS & REVIEWS

A NEW BOOK ... ASTROLOGY AND THE SEVEN RAYS ... & MORE TO COME

There is a decidedly esoteric flavour to the recent and forthcoming publications.

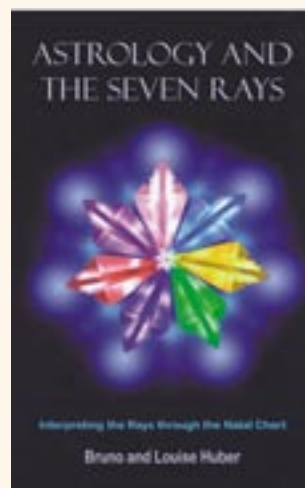
Astrology and the Seven Rays is a new book by Bruno and Louise Huber. According to the ageless wisdom, as represented for example in the books of Alice Bailey, the seven rays are cosmic streams of energy that penetrate and underlie all life on our planet. This book introduces the psychological application of the rays, which can give insights that could not otherwise be gained from the astrological chart.

Bruno Huber discovered a new method of determining the rays in the natal chart. This enables you to find your own personal ray combination, and those of others.

Astrology and the Seven Rays also opens up a new approach to esoteric psychology and esoteric astrology, and provides insight into the process of spiritual development.

The book has quite a history. In 1998 Bruno and Louise gave what turned out to be their last workshop together at the Beacon Centre in Devon, on the subject of Astrology and the Seven Rays. The transcript of their talks at that inspirational event has been available as an API(UK) booklet since late 1999, and many readers of *Conjunction* will have a copy.

The booklet was so well regarded by the Hubers that copies were sold to students at their workshops in Switzerland. It was subsequently translated into German and published in 2006 as a book *Astrologie und die Sieben Strahlen*, incorporating some additional material from Louise, covering ground that



there had not been time for in the original seminar.

That additional material has since been translated into English, and has been incorporated in this revised English edition in book form. Thus we are making available the Hubers’ ideas on esoteric astrology to a wider audience, as well as providing the information in a more convenient and cheaper form.

A review of *Astrology and the Seven Rays* will appear in the next issue of *Conjunction*.

Two new booklets are also in the pipeline. The first includes articles by Bruno and Louise Huber on the formative years of astrological psychology and API, including their times working with the Arcane School and with Roberto Assagioli. The second, by David Kerr, is on the subject of karmic astrology. For details of availability, keep an eye on the API(UK) Bookshop catalogue and the website. **Barry Hopewell**

PUBLICATION IS PLANNED FOR DECEMBER 2006
FOR DETAILS OF THE API BOOKSHOP SEE THE BACK PAGE
For further information about the work of Alice Bailey visit www.lucistrust.org

COSMOS AND PSYCHE by RICHARD TARNAS

reviewed by David Lorimer

I recently recommended a prospective philosophy student to read *The Passion of the Western Mind*, Richard Tarnas's earlier book published 15 years ago – an extraordinary tour de force charting the heroic journey of the Western mind from its origins to the present-day. Brilliantly and perceptively written, it was a landmark of intellectual history, an eloquent articulation of the emerging participatory worldview. *Cosmos and Psyche* takes the argument further, redefining the relationship between inner and outer, using Jung's concept of synchronicity and the tradition of archetypal astrology.

Subtitled 'intimations of a new world view', *Cosmos and Psyche* has eight sections: transformation of the cosmos, in search of a deeper order, through the archetypal telescope, epochs of revolution, cycles of crisis and contraction, cycles of creativity and expansion, awakenings of spirit and soul, towards a new heaven and earth. It begins with a penetrating analysis of the paradox of the modern self that can only deepen the reader's understanding of our modern western predicament. Tarnas lists three fundamental factors now affecting people: a profound metaphysical disorientation and groundlessness, a deep sense of alienation and the need for a deeper insight into the unconscious forces that shape human life and history. *Cosmos and Psyche* addresses this crisis of the modern self by introducing the cosmological perspective of archetypal astrology.

At the beginning is a significant quotation from C.G. Jung: 'our psyche is set up in accord with the structure of the universe, and what happens in the macrocosm likewise happens in the infinitesimal and most subjective reaches of the psyche.' Jung was a pioneer in reaching beyond contemporary notions of linear causality and a radical split between the self and the world. His interests in divination, gnosticism, alchemy and Oriental philosophy opened up new vistas and led to his formulation of such key ideas as synchronicity, archetypes and the collective unconscious. Tarnas distinguishes two paradigms of history. The first depicts 'the evolution of human consciousness as an epic narrative of human progress, a long heroic journey from a primitive world of dark ignorance, suffering, and limitation to a brighter modern world of ever increasing knowledge, freedom and well-being.' The second perspective 'reveals the progressive impoverishment of human life and human spirit, a fragmentation of original unities, a ruinous destruction of the sacred community of being.' The point is

that 'the two historical dramas actually constitute each other' as light and shadow, outer and inner.

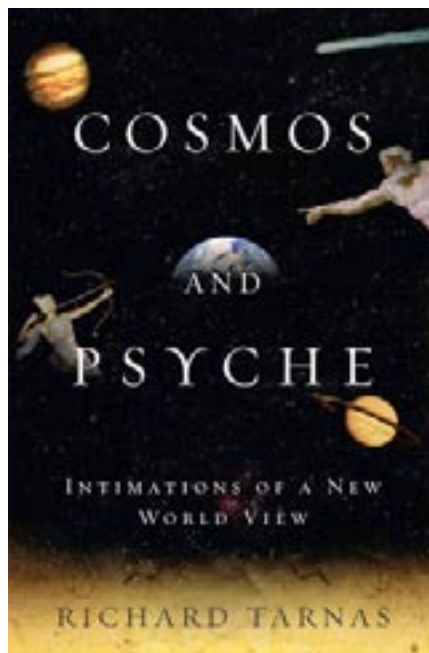
The same goes for the forging of the modern self. The very differentiation of the self from the world and of the human being from nature led inexorably to the disenchantment of the world and a radical split between inner and outer. The external world has been drained of intrinsic meaning and purpose and has 'metamorphosed into mindless, soulless vacuum, within which the human being is incongruently self-aware.' In other words, 'the achievement of human autonomy has been paid for by the experience of human alienation.'

We now find ourselves in a transitional period between two worldviews. Tarnas argues that we have moved beyond Newton, but not Copernicus, within whose cosmological metastructure we still live. The tension between the reason of the Enlightenment and the sensibility of Romanticism exists within each of us. In our modern disenchanted cosmos, there are tangible consequences arising from what Tarnas calls our collective psychic numbness and desperate spiritual hunger

which give rise to 'an addictive, insatiable craving for ever more material goods to fill the inner emptiness and producing a manic techno-consumerism that cannibalises the planet.' It is therefore legitimate to pose the question of the ultimate impact of cosmological disenchantment on our civilisation. The dominant mechanistic metaphor may have led us to misperceive the cosmos by projecting its own image and mistaking it for objective reality.

To elaborate this point, Tarnas constructs a parable of two suitors approaching the universe, asking which one is likely to understand its mystery better. The one driven by a desire for mastery, certainty and control, or the one whose act of knowledge is 'essentially an act of love and intelligence combined', and who views the universe as being at least as intelligent and noble as himself.

It is a call to extend our ways of knowing beyond the purely linear rational mode, 'the light of reason re-evaluated, transformed, and deepened by the very mysteries it sought to illuminate.' He builds on Jung's concept of synchronicity, pointing out that he used many different faculties of cognition – empirical, rational, emotional, relational, intuitive and symbolic. Synchronicity should not occur in a random, purposeless universe. Taking this seriously means undertaking a radical re-evaluation of the relationship between inner and outer.



FROM THE BOOK JACKET:

Based on thirty years research, *Cosmos and Psyche* is the first book by a widely respected scholar to demonstrate the existence of a direct connection between planetary movements and the archetypal patterns of human experience. The book examines such famous epochs of cultural rebellion as the 1960s and the French Revolution, as well as periods of historical crisis such as the world wars and September 11 and its aftermath. Tarnas also explores comparable planetary correlations in the life of individuals, from Darwin, Nietzsche, and Freud to Martin Luther King, Betty Friedan, and John Lennon.

At this stage Tarnas introduces his studies of archetypal astrology. He does this sensitively, realising that most readers will have a sceptical reaction, which he helps examine and explain. He introduces a key distinction between concretely predictive and archetypally predictive astrology. The former suggests an almost mechanistic determinism, while the latter confers on the human being a co-creative and participatory role with the archetypal forces. This is a difficult point for some to grasp, as there is a residual suspicion that the notion of archetypes could be made so flexible as to fit any pattern of events. However, readers will have to make up their own minds in view of the immense wealth of illustrative material which Tarnas gathers in support of his case. It is helpful that he defines astrology as resting on a 'conception of the cosmos as a coherent embodiment of creative intelligence, purpose, and meaning expressed through the constant complex correspondence between astronomical patterns and human experience.' This definition makes it easy to see why modern science represents the exact metaphysical antithesis of this position.

Tarnas is careful to distinguish between causality and correlation or correspondence. Many of the key scientific developments of the last hundred years move beyond the atomistic model to a conception of the universe as a coherent and interconnected whole 'informed by creative intelligence and pervaded by patterns of meaning and order.' With this kind of cosmology, it is not such a large step to accept the relevance of archetypal astrology. He suggests that the archetypes of the collective unconscious are ultimately embedded in macrocosm and represented through the planets, whose positive and negative qualities he subsequently explains. He then introduces the general concepts of the natal chart, personal and world transits, cycles and aspects, illustrating these with the charts of prominent individuals. It is clear of that his 30 years of research have yielded an enormous database, only the tip of which appears in the book. His basic model is that the natal chart indicates 'the underlying archetypal corporal structures of life, while the transits suggest the tempo and rhythmic structure of its unfolding.'

The next four sections unfold the substance of the work by considering planetary alignments corresponding to revolution (Uranus/Pluto), crisis and contraction (Pluto/Saturn), creativity and expansion (Jupiter/Uranus), and spiritual awakenings (Uranus/Neptune). It is impossible to convey the depth and breadth of analysis that Tarnas brings to bear on the patterns of human life and history. Readers must arrive at their own conclusions after reflecting on the material. His erudition is monumental, ranging across history, philosophy, sociology, psychology, science, technology, literature, music, film and the visual arts. A particularly fascinating aspect of his exposition relates to what he calls synchronic and diachronic manifestations. The former refer to concurrent events, while the latter reveal patterns across time corresponding to planetary conjunctions. For instance, patterns of revolutionary emancipation occur in the late 18th century, the mid-19th century, the early 20th century and the 1960s. Correspondingly,

there are conservative reactions to these periods. In this sense, one can see how future conjunctions could be archetypally predictive, although it is not possible to know exactly what sequences of events will actually occur.

The new perspective emerging from the book is 'a profound awareness of the human condition as one of embeddedness and creative participation in a living cosmos of unfolding meaning and purpose.' We can sense the urge to overcome older separations and dualisms 'between the human being and nature, spirit and matter, mind and body, subject and object, masculine and feminine, intellect and soul, cosmos and psyche - and to discover a deeper integral reality and unitive consciousness.' This corresponds to a shift of emphasis from the sharply differentiated autonomous self of the 1960s to a more permeable relational self corresponding to the metaphor of the Internet or web of life.

If one accepts the broad outlines of time as his argument, it becomes possible to forge a 'more informed and creative response to the archetypal forces at work at any given time.' In other words we can enhance our self- and collective awareness and overcome the Enlightenment sense of loss by reconnecting with the cosmos and redefining the relationship between inner and outer. Tarnas concludes that 'the cosmos is intrinsically meaningful to and coherent with human consciousness' and is pervaded by creative intelligence in which we can consciously participate by reuniting the human and the cosmic. Hence one can understand that 'the human spirit is the spirit of the cosmos itself as inflected through us.' What more important message could there be for our time? If you want to understand more deeply the currents which have shaped and are shaping our world, then this passionate, brilliant and luminous book is essential reading.

ABOUT THE REVIEWER:

David Lorimer is Programme Director of the Scientific and Medical Network. This review first appeared in its *Network Review*. David is author and editor of a number of books, including *Radical Prince – the Practical Vision of the Prince of Wales*.

ABOUT THE AUTHOR:

Richard Tarnas is a cultural historical and professor of philosophy and depth psychology whose first book, *The Passion of the Western Mind* became both a bestseller and required reading at many universities. A graduate of Harvard University, he is founding director of the Philosophy, Cosmology and Consciousness graduate programme of the California Institute of Integral Studies in San Francisco and also teaches on the faculty of Pacifica Graduate Institute in Santa Barbara.

WEB ADDRESSES

Cosmos & Psyche:

<http://www.cosmosandpsyche.com>

Scientific & Medical network:

<http://www.scimednet.org/>

COSMOS AND PSYCHE is currently available in Hardback. 569 pp, Viking ISBN: 0670032921

The paperback edition will be published by Plume in April 2007 ISBN: 0452288592

KABBALAH FOR LIFE *by Will Parfitt*

How to Use the Power and Wisdom of this Ancient Tradition

WILL PARFITT TALKS ABOUT HIS NEW BOOK and how the Kabbalah can deepen your connection to the universe and guide you throughout your life.

“Kabbalah emphasizes that we can find the deepest expression of our spirituality in our ordinary, daily lives and my latest book, *Kabbalah for Life*, aims to make Kabbalah alive in everything you do, even in your communications with ‘extra-dimensional’ beings. This may appear strange, even ridiculous, until we consider that any being or entity outside of ourselves can be considered in this way, even other human beings. Whether these ‘beings’ actually exist outside or whether they are figments of our imagination, projections, or parts of us that we do not recognize, we all have the experience that they exist.

Most cultures throughout history have described beings, some angelic and some demonic in nature, that exist in other realities or dimensions parallel with and sometimes interpenetrating our world. Some mainstream psychologists claim these ‘extra-dimensional’ beings are the impersonal forces of nature which we personalize in an attempt to gain control over them. According to some more far-sighted psychologists and those aware of the new physics, however, these beings are representational of real forces. Behind our everyday perception, when we enter the world of sub-atomic particles, there is a level of existence where different laws apply, but which is no less real because invisible on a mundane level. The same applies to all ‘levels of existence’ which we cannot perceive with our usual senses.

The question arises why anyone would want to make contact with any of these other ‘beings’, particularly the demonic ones! If we are to be whole, to include rather than exclude all of ourselves, one way of achieving this is through making contact with all the forces within our universe. We are usually quite willing to include the ‘good guys’ – if I suggest that you talk to your Guardian Angel you would probably have little resistance (assuming you believed it possible). On the other hand, once we discuss communicating with demons we are entering the realm of the shadow which includes those parts of ourselves that we would rather not face.

Any aspect of our being that we exclude from our awareness becomes part of our shadow which has been usefully described as being like a big bag we drag round behind us. The more shadow we have, the heavier our bag becomes and the more it restricts our free movement. Conversely, the more material from this ‘shadow bag’ we can dredge out, face, and integrate, the lighter the bag becomes and the more energy we have available to fulfil our life functions, from the loftiest sense of Divine Purpose through to everyday functions that help us survive in the world.

If we do not face our anger over, say, a poor work situation, this suppressed anger and the associated anxiety will become part of our shadow. If we find ways of expressing the anger, we will no longer be pulled down by the weight of it, and will free our energies, perhaps to make a life-enhancing decision about the work. On the other hand, if we do not express our anger, it is pushed deeper down into the shadow bag until we are no longer even aware of its existence. As a result there will be tension and holding patterns in our body which will cause pain and disease later in life. We might start smoking tobacco to alleviate the stress from denying the anger; we might over-eat in an attempt to suppress the attendant feelings.

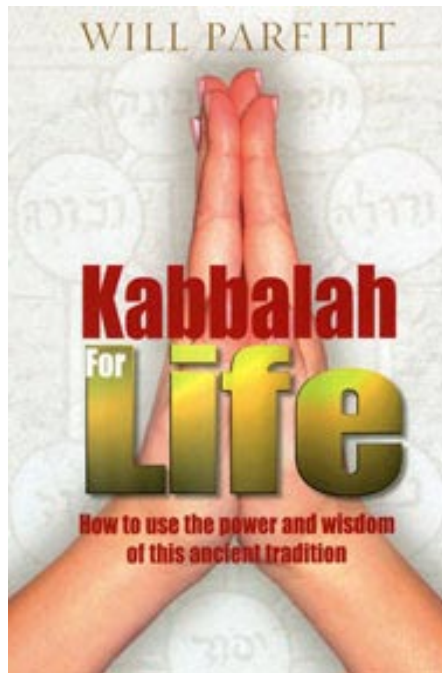
We can then say that our behaviour opens us up to the influence of the corresponding demonic force. For instance, a demon whose presence brings ‘cancerous mis-growth of cells’ might be allowed a foothold in the body which then leads to illness or death. We do not have to believe in demons to understand the process of what is happening. Perhaps what we are dealing with is a personification of the suppressed material in an individual’s subconscious. Whatever we believe, however, what we can do is to start communicating with the demons or ‘suppressed energies’, find what they need to express, and through various appropriate actions, dispel the demons through releasing the pent-up anger.

On the Kabbalistic Tree of Life, the sphere called Daath is the access point to the reverse side of the Tree where all the demons that bring ‘disease’ into our lives exist. Whether these demons represent aspects of our own shadow nature or whether they are actual entities with a life of their own is irrelevant as we can communicate and affect our relationship with them as if they are real. Thus we can affect a healing through communicating with demons as much as through contacting our Guardian Angel. Kabbalistic healing includes work with both spirit and shadow, bringing us closer to a wholeness that heals not just ourselves but all the extra-dimensional beings in our world.”

*This article first appeared in
Watkins Review, 2006, Issue no. 14*

ABOUT THE AUTHOR:

Will Parfitt is the author of several books including a Diploma Course recommended text, *Psychosynthesis: The Elements and Beyond*. Will trained in Psychosynthesis, is a registered psychotherapist with the UKCP, and leads training courses in England and Europe. Full details of his work including books and courses can be found at www.willparfitt.com



KABBALAH FOR LIFE is published by Rider in Paperback ISBN 1846040353, £12.99

ASTROLOGICAL COACHING? *by Maggie Jeffery*

We hear a lot about coaching these days. Sports Coaches, Corporate Coaches and Life Coaches – not to mention “Super Nanny” – seem to be springing up everywhere.

So what is Coaching, how does it differ from Counselling and does it have any relevance to Astrological Psychology? Here, in a brief overview, I am exploring the feasibility of using the Birth Chart in a Coaching session

Coaching is still evolving and there seems to be confusion still about the boundaries of coaching, what it is, and how it is to be defined. Terms such as consultancy, mentoring and training are often used interchangeably which tends to muddy the waters. From Sports Coaching, the discipline moved into business and more recently, probably in response to the ever increasing pace of social change, Life Coaching appeared on the scene.

In general Coaching is widely considered to be about performance or achieving goals. Yet Timothy Galwey quoted by John Whitmore (2002), described it as “unlocking a person’s potential to maximise their own performance. It is about helping them to learn rather than teaching them”.

A big and important difference between coaching and counselling is that while, increasingly, there seems to be a trend towards counselling becoming somewhat medicalized and seen as therapeutic, coaching is more about personal growth and working with someone who is motivated, ready and committed to move forward in their lives.

Coaching takes the form of a focused conversation between two people using listening skills and specific questioning techniques and tools and there are many ways of working. For example “Co Active Coaching” is a non-directive way of approach. As well as moving forwards towards a goal, Co-Active Coaching also describes what it calls “process coaching” which is about enabling client to explore a current (not past) issue using coaching skills.

Consider the Amphora and the model of the “Threefold Personality”. The image portrays life as an evolving journey with all the sub-conscious, conscious and super-conscious processes to which the individual will be subject from birth through adulthood to old age and death. The Middle Layer of the Threefold Personality relates to the Sun, Moon and Saturn representing aspects of the Ego, and as self awareness develops offers the potential of choice in our lives. Instead of being controlled by our unconscious conditioning and reacting to the world, we can choose how we want to respond; if we are moving towards self awareness, it could be said we can begin to create our own environment according to how we choose to “be” in the world and how willing we are to act upon this.

At the point where someone chooses to take responsibility for themselves and their life and commit energetic resources for this purpose, working with a coach can be of enormous value.

I sometimes find metaphors very useful!

Imagine that you’re on holiday and arrive at a strange house in the country in the middle of the night. There’s no moon, it’s raining and pitch dark and you can’t see a thing. Then you drop your keys in a puddle. You’re groping around trying to find them in the dark when someone arrives with a flashlight. With the help of the flashlight you retrieve your

keys and then can see how to get into the house, find the light switch and put the lights on . . .

A coach doesn’t tell another person what to do. The power balance is shared between the two people and the Co-Active Coaching Model describes the actual work as taking place in a third element, “the Coaching Alliance”. Each party gives power to this third element and it is from here that those magical “Aha” moments arise.

Using the Birth Chart as a tool in the Coaching Alliance has the potential to be very empowering. The Chart is owned by the client and while the Coach has specialist knowledge about mechanics of the chart, the experience of how it works in practice lies with the client. The colour and imagery in API-UK Charts could support the intuitive processes of both parties and these could be explored with coaching questions.

John Whitmore describes the “GROW” model of coaching which identifies a Goal, explores the Reality of the situation, looks at available Options and then makes a decision about Ways forward.

How could the Birth Chart help with such a model? Motivation and commitment are fundamental if coaching is to succeed and it would seem that the aspect patterns that reveal unconscious motivation might offer a unique tool to underpin such work. Possibilities could be identified to explore goal setting – a major part of the process – perhaps looking at the North Node or, for more immediate goals, the Age Point. The orientation of the Chart could help to clarify options and ways forward so that there was a realistic plan of action that the client could follow.

For example, someone with a strong emphasis on the “You” side of the Chart might really struggle with a goal and plan of action that required him or her to work alone without the stimulation of other people. There could be all sorts of indications which would help to identify realistic goals and ways to see them carried to fruition. These are just a few thoughts that spring to mind and I’m sure there are many others.

One major obstacle is that a great deal of coaching takes place by telephone – which could prove to be a limitation. However with technology expanding by leaps and bounds, I am sure this could be overcome in the future.

I shifted from person centred counselling to coaching purely on an intuitive hunch. It took me some time to work out that, in fact, it was the discipline I had been looking for not least because I began to make connections with psychosynthesis as well. In fact, John Whitmore (2002) discusses psychosynthesis when discussing “the development of meaning and purpose” and talks about the Spiritual Journey.

My Birth Chart is full of ambivalence and it has taken me many years to become aware that my real interest both when working as a trainer and then later as a counsellor was in fact, more about personal development than working in a therapeutic way. In recent years I have found tremendous joy and fulfilment in witnessing someone reach for their potential and working as a coach offers me just that.

REFERENCES

Whitmore J, 2002 “Coaching for Performance”, Nicholas Brealey, London
Whitworth L, Kimsey-House H, Sandahl P, “Co Active Coaching”, Davies-Black Publishing, Palo Alto, USA

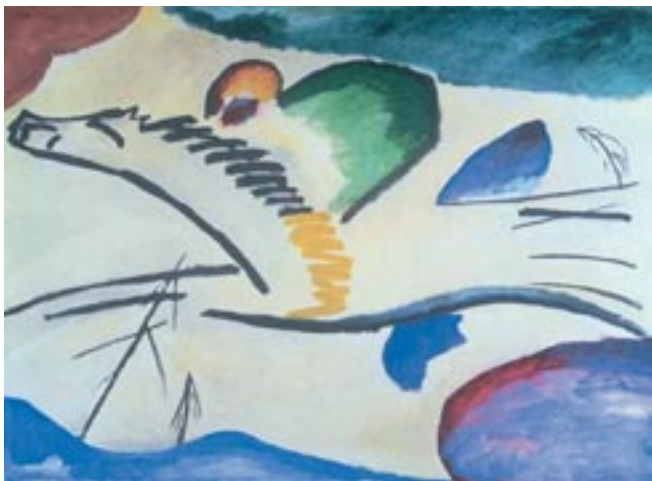
WASSILY KANDINSKY: Colour, Shape and the Symphony of the Soul by Sue Lewis



Murnau – Staffelsee, 1908

Tate Modern's recent exhibition, *Kandinsky: the Path to Abstraction*, displayed his work from 1906-21 and its evolution from naturalistic scenes of boats on the Volga and the small town of Murnau nestling in the Bavarian Alps to a more abstract vision. His paintings of the first two decades of the 20th century are in vibrant colours, and his book, *Concerning the Spiritual in Art* (1911), is recommended by Bruno and Louise Huber in *Astrology and the Spiritual Path* as "one of the most psychologically valuable contributions to colour theory" (p.7).

On my first visit to the exhibition I was unaware of these connections and simply enjoyed the invitation to share the artist's emotions and spirit of place; concrete impressions ceded to improvisations of spontaneous mood, and lyrical and symphonic compositions – synthesising music, art and spirituality.



Lyrical, 1911

Rhythm and colour harmonise in *Lyrical*; the flying horse and soft colours transport us into a spiritual world. In 1911, Kandinsky and Franz Marc created *The Blue Rider* Expressionist Group.

Form as well as colour, rhythm and space, "has a power of inner suggestion", especially an "acute-angled triangle ... moving slowly, almost invisibly forwards and upwards" in search of food for the spirit. In *Kochel – Straight Road* mountains and houses become towering geometric shapes and I recollect the seed thought for Sagittarius: "I see the goal. I reach the goal and see another."

The cool blue road leads to the foot of a deep blue talent triangle. Creativity is nurtured by warm yellows, oranges and reds in this peaceful painting – whose harmony is a touch too fixed and style more Cubist than much of his work.



Kochel – Straight Road, 1909

Many of Kandinsky's paintings in the years leading up to the First World War are charged with a darker mood – *The Last Judgement*, *Deluge* and *The Black Spot* – a confrontation of light and darkness, spiritual and material, where black represents the silence of death.

Kandinsky wrote many wise words. His perception that "an unsuitable combination of form and colour is not necessarily discordant, but may, with manipulation, show the way to fresh possibilities of harmony" can be applied to interpretation of an astrological chart. In our own and other people's aspect patterns we often see difficult combinations of form and colour and look for ways to raise awareness, create a balanced dialogue between these discordant tones and develop a harmonious relationship at a higher level.

A key quotation of Kandinsky's brings the heightened experience of art, music, vision and sound together:

“Colour is the keyboard, the eyes are the hammers, the soul is the piano with many strings. The artist is the hand which plays, touching one key or another, to cause vibrations in the soul”

In the final work I've chosen to share with you, *Painting with Three Spots*, you can see both the artist's palette and the strings of his instruments, the tools of his creative spirit in a womb-like container made up of elemental colours in soft shades. A tinge of nostalgia creeps in as Kandinsky prepares to leave Germany and go home to Russia at the start of war. There's yellow light, green restfulness and heavenly blue, with ribbons of subdued pink and red. Orchestrally, deep blue is the cello, green the placid middle notes of the violin, cool red the violin's singing notes and the sad middle tones of the cello.

I feel privileged to enter the intimate world of the artist as he lovingly packs his paints and his instruments to go on his homeward journey.

Kandinsky was born in Moscow in 1866: on 4 December by the Julian calendar – 16 December in our modern calendar – at 03:29:40 local time (0:29:40 GMT). His chart is interpreted by Sue Lewis on the API website: www.api-uk.org/interpkand.htm

You can download a free copy of *Concerning the Spiritual in Art*: at: <http://onlinebooks.library.upenn.edu/>

Visit the Tate Modern web pages for more information about Kandinsky at: <http://www.tate.org.uk/modern/exhibitions/kandinsky/>



Painting With Three Spots, 1914

WORKSHOP DATES FOR 2007

- Jan 6th **The Nodal Axes and Crossing Points** with Maria Maw. Expected to be held in Marple, Stockport. Telephone Maria on 01625 434368 email mariamaw@onetel.com. Cost £20.
- Feb 17th **The Ego Planets, Relative Strengths and Family Model** with Maria Maw. Details and cost as above.
- Mar 17th **The Click Chart** with Ely Gibbs and Helen Lambert. Venue to be advised, phone Helen on 07790 277272, email lambert.hallam@ntlworld.com Cost £20.
- May 12th **The Inverse Points, Crisis or Creation? Journey to the Inner Core** with Maria Maw. Details and cost as above.
- July **The Good, the Bad and the Ugly - cultivating the Transpersonal Planets** with Joyce Hopewell. Date, venue and cost to be advised, please contact Helen Lambert (above) for more details.

If you would like to be on the email list for further workshop announcements please contact Maria or Helen (above) or our Workshop Programme Organiser Jane Brooks (contact details on page 2)

WOULD YOU LIKE TO WRITE FOR CONJUNCTION?

Do you have something to contribute to the next issue of Conjunction? Short articles just as welcome. Photos and images as well. All photos and original material will be returned promptly. Contact Sara Inkster, the Editor, for further information, see page 2 for contact details. Please note that space is limited, so publication is not guaranteed, but all items will be considered.

CRYSTAL MOUNTAIN SEMINARS

JEREMY COOPER, a course tutor and Face to Face facilitator has an ongoing series of monthly seminars - The Crystal Mountain Seminars - based on Astrology and beyond. They are held on the second Saturday of every month from 11.00 am to 5.00 pm in South Cumbria. (There is a train connection).

Contact Jeremy on +44(0)1539 36420 or email him on crystalmountain@tiscali.co.uk for further information.

STELLAR ILLUMINATIONS

KERSTIN LINDLEY-JONES, is planning to relaunch her inspiring 'Stellar Illuminations' workshops in 2007. Stellar Illuminations is a unique way of working with experiential astrology on the level of the Soul. If you would like to know more or are interested in participating contact Kerstin at Helix House Natural Health Centre, 15 Warwick Street, Oxford OX4 1SZ. She can be contacted on +44(0)1865 243351, e-mail: info@helixhouse.co.uk or visit the website www.helixhouse.co.uk.

Joyce Hopewell - Radio Astrologer!

Some of you may not know that our Principal, Joyce Hopewell, has a regular slot as Resident Astrologer on BBC Radio Stoke. She is 'on air' every month for an hour's phone-in on the Tim Wedgwood Show.

"With my own Moon in the 7th House of my chart, which is the area of life where we make contact with others, I have a fantastic tool for meeting people, talking to them and getting them to understand."

BBC RADIO STOKE
94.6 & 104.1FM

FACE TO FACE: October 2006

This Year Face to Face took place in the beautiful setting of Buckland Hall in the Brecon Beacons. Four groups met – ASTROLOGY 1 and ASTROLOGY 2, PSYCHOSYNTHESIS and ESOTERIC ASTROLOGY. Reports below from two of the workshops.

ASTROLOGY ONE by Margaret Carman

A weekend residential course studying Huber astrology? I have to admit to being somewhat reluctant to take a weekend away from my partner and head off to Buckland Hall that particular Friday lunchtime. But the sun was shining as I set off and adventures beckoned...



Buckland Hall and its location were stunning and an incredible sense of peace descended on me as I stood in my room admiring the view across the hills and woods.

I had booked to study Astrology One with the intention of reviving my interest and understanding of the basics of Huber astrology. Having started Module One when work was quiet last November,

work picked up and I had less time than I'd hoped to study – so this refresher and insight should help.

It did so much more than that! Tutors Jeremy and Maria offered a great combination of style and facilitation and my fellow delegates were really keen and prepared to share what, at times, was the emotional learning journey of self-discovery.

Perhaps for me the most pertinent aspect of learning was in Maria's encouragement – and perceived permission – to work with as many people as possible and access their chart information with them to find out what aspects and planets in the relevant houses meant for them. I learn by doing but had been waiting to work with people until I felt that I knew more...

I now have a perfect way into learning practically and with Megastar software and study group sessions with tutor Joyce to ensure that I enhance and develop my learning.

ASTROLOGY TWO by Marilyn Burnett

I found 'Face to Face' Astrology 2 invaluable this year as I opened my eyes to a whole new level of Astrological Psychology. We looked at Age point, House charts, Node charts and Click charts, all of which were totally fascinating. I learnt so much and it has greatly increased my desire to learn more.

Among other things I discovered how events of psychological importance that happen in life now are shown via the Age Point and are linked to past lifetimes in the Node chart. Also how the House chart can show us how one is conditioned by the environment and people that influence our lives and that one can decide either to use these abilities or reject them. Personally I discovered that I had an unsuspected Neptune in my house chart which seemed to point to a natural, and to me unquestioned, link to the spiritual side of my life that I could really identify with. This appeared to be blocked by strong red oppositions between the 3rd house and the 9th house indicating the tussle that I had had for years in coming to terms with my own individual thinking on the subject of Christianity rather than the beliefs taught by my early environment. It was all very revealing and exciting.

Meeting with other students, especially in such a wonderful setting, was such a marvellous and enlightening opportunity. I will certainly be attending this workshop again in order to absorb more!



Plans are currently being made for Face to Face for 2007 and all members will receive details in due course.

COUNSELLING QUALIFICATIONS FOR DIPLOMA STUDENTS

If you are enrolled on the Diploma in Astrological Counselling (but not the Diploma in Astrology) you are required to have completed an external course (of your choice) in basic counselling skills or have prior experience/training in a practical setting (work or voluntary work). If you want your prior learning or experience credited please contact Joyce Hopewell, API (UK) Principal to discuss this.

In the UK the course would be at least a validated "Certificate in Counselling Skills" – not just the short course in Counselling Concepts. Typically any suitable course will involve at least 100 hours commitment, and often more. It will provide you with a good level of practical skill when working with clients. Most Further/Adult Education colleges in the UK offer training in counselling, or there are a number of private providers.

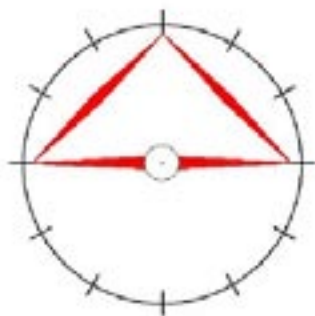
In the UK the course should be validated by the Awarding Body Consortium (ABC). You will find a list of providers approved by the British Association for Counselling and Therapy (BACP) if you visit <http://www.bacp.co.uk> or

telephone 0870 443 5252, email bacp@bacp.co.uk. In Scotland you will be looking for COSCA (Counselling and Psychotherapy in Scotland) certification, for details see <http://www.cosca.org.uk>, telephone 01786 475140, email: info@cosca.org.uk for a list of COSCA Accredited Trainers. Similar courses, for example the NUI (National University of Ireland) Certificate In Counselling, are available in Ireland, where they are usually run in affiliated colleges. If you are an overseas student please confirm with Joyce Hopewell that you have the level of training/experience required.

BACP advise that you look at the different models of counselling before choosing a course:

"Although there is considerable consensus about the core content of a counselling course, there are nevertheless distinct methods of counselling. Most courses start from a theoretical base - typically humanistic, psychodynamic, cognitive or behavioural. Before enrolling on a course it is advisable to be aware of its theoretical emphasis and what that means in terms of the learning experience offered and the skills acquired."

ASPECT PATTERNS: *The Efficiency Triangle*



At a recent meeting of the Cheshire Study Group we looked at the Efficiency or Achievement Triangle, one of the “all red” aspect patterns in a chart. In traditional astrology it is known as the T-Square.

Below is a short introduction to looking at a chart that has an Efficiency triangle in it. Then we have the charts of

two Study Group members who have kindly shared their understanding of how the efficiency triangles work for them. So thanks to Jane and Caroline for sharing this.

To find out more about this and other Aspect Patterns, have a look at *Aspect Pattern Astrology* by Bruno, Louise and Michael Alexander Huber, available from the API Bookshop - see the back page of this newsletter for contact details. Module Two of the Diploma Course covers Aspect Patterns in detail.

Efficiency Triangles are triangular figures (mutable motivation) comprised an Opposition and two Squares (cardinal mode of action). They use the Opposition to store or bottle up energy (like a battery), which is later discharged via the Squares to the apex planet for use in the area of life designated by house. They give extended capacity for intensive periods of work, but people with this aspect may sometimes make work for themselves if there is none to be done. The squares work in phases, the mutable nature of the pattern means time is needed to rest and “recharge the battery”. The on/off nature of this can make people feel guilty or depressed when they are “resting” but it is the depletion that is the problem and the rest the solution. Understanding of this can allow the aspect pattern to be used to maximum effect.

The effectiveness of the figures and how successfully this energy is discharged depends on the planets involved, their positions and the compatibility of sign and house. If a figure is not effective, it can lead to rigid states of awareness. We do not change but rather repeat our mistakes or patterns of behaviour over and over again.

When you look at a chart which contains an Efficiency Triangle other points to take into account are:

- Which cross is involved – in Jane’s case (below) it is the fixed cross 2/8 and 5/11
- Are signs involved complementary to the cross – Jane’s signs are all Cardinal – Aries, Cancer, Libra and Capricorn
- Are planets involved hard or weak? Hard planets suit the pattern better, softer planets will require more rest periods and also more effort and application to get them working. Sun, Mars or Saturn as apex planets are good for achievement. With weak planets at the apex, the motivation and principle of the figures is contradictory and they only function adequately. This can lead to psychological pressure. Such situations are good for those in ‘helping’ professions but beware ‘helper syndrome’. Looking at Jane’s chart we can see Mars and Uranus, hard planets, and Moon and Neptune which are soft.

Saturn can be either, depending on sign and aspects, and Jane feels that in this case it is probably soft.

- Planets on cusps are potentially more efficient in the environment, while Low Point (LP) planets will need a lot more time to reach goals. Intercepted planets also take a lot longer to achieve aims.
- Crosses and Signs both have a motivational role and the Houses express how things are done.

JANE BROOKS

I have two Efficiency Triangles:

The first one involves MA at Low Point in Capricorn in 11th opp UR in Cancer in 5th (2.5 degrees from cusp of 6th) square MO in Aries in 2nd

The second one involves SA/NE in Libra in 8th opp MO in Aries in 2nd square UR in Cancer in 5th (2.5 degrees from cusp of 6th)

Some people may see this as an incomplete Efficiency/Achievement square. For me it works as two separate figures. The Efficiency/Achievement square would indicate constant, steady work or workaholic tendencies, which I do not have. I switch on and off. I work hard and then break to regroup and then start again. I can switch tasks and always have several on the go at once. Stress comes from a feeling of ‘so much to do and no time to do it’. I do take breaks though when I just crash out and do nothing for a couple of days.

The motivation of the triangles is more dynamic and flexible. I want to reach goals fast.



MA at Low Point in Capricorn in 11th opp UR in Cancer in 5th (2.5 degrees from cusp of 6th) square MO in Aries in 2nd

My figures are on the Cardinal sign cross and Fixed house cross. The Cardinal motivation gives strong will power and focuses energy towards the desire to build, maintain for security and to protect my assets and eliminate problems. This ‘asset protection’ includes a highly developed sense of self-preservation and aversion to physical risk taking. The Cardinal energy constantly initiates new ideas and projects. I have a great variety of ideas and lots of energy. I can stick at something that I really want to do but also can be lured into starting several things at once. Mars is low point and so I do not always get things done quickly and this leads to frustration. Mars’ square aspect to the Moon is also one-way, which again will hinder the energy flow.

Mars opposite Uranus is very energetic and creative but can be spasmodic. It can cause over activity and stress. The energy built up is directed to the weaker Moon in the 2nd for maintaining my own assets and belongings, whether material or otherwise. As the Moon is a weak planet and not an efficient apex planet out in the world, this figure has most often been used to release the tension of the opposition through emotions, either a typical Aries outburst if thwarted or threatened or to achieve inner emotional security via accumulating whatever promotes that security.

SA/NE in Libra in 8th opp MO in Aries in 2nd square UR in Cancer in 5th (2.5 degrees from cusp of 6th)

Saturn/Neptune opposite the Moon is a weaker opposition being channelled to a stronger planet, Uranus. Again the Cardinal/Fixed sign/house cross is involved so energy is directed towards achieving security. The energy of the opposition is less violent and more involved with emotions, ideals and dreams and their practical application being channelled via Uranus in a creative way (5th house) and in the area of work and service (6th).

When younger I suffered from feelings of anxiety and I think this figure can explain that. My fears were unspecific (Neptune/Saturn/Moon) and I felt a lack of direction in life. The opposition is on the 2/8 axis of possessions and will be involved with security, finances and self worth. There was a feeling of insecurity and a lot of inner tension. Uranus needed a real focus but is not a tool planet and is more concerned with transpersonal energies. Being stressed on the cusp of the sixth, one end of the existence axis, I had 'existential' fears and felt depressed about life in general. Things improved after Age Point passed over Uranus and I got involved with computers and alternative therapies – very Uranian. Astrology came soon afterwards. Nowadays I think I am using this figure's energy for concentrating on my Astrology and esoteric study.

The two figures do not work in isolation and the combination of these powerful energies is rather like a dynamo or energy generator. I think they work adequately, however, the apex planet of each figure is constrained by their opposition to the

other planet/s and so the energies generated are always going to struggle a bit to achieve the 'efficiency' they desire.

CAROLINE BLACK

I have a Fixed 'Efficiency triangle' with Fixed Signs, with Saturn in Aquarius in the Second House, in Opposition to the Sun in Leo conjunct the North Node, squaring Neptune in Scorpio at the apex of the triangle.



My experience of this aspect pattern has been a desire to escape (Neptune) from the reality of the tension held in the Opposition of the two Ego planets, Saturn and Sun, and 'refuge sought in a fantasy or dream world, in pleasure, illusion or states of intoxication' (*The Planets*, Bruno and Louise Huber, p.86) is a familiar pattern I can recognise in my life.

Seeking a balance between the planets in Opposition through a positive use of the Neptunian energy has led to a desire towards 'mystical union', and my yoga practice happily combines a conscious awareness (Sun) through a disciplined use of the body (Saturn) with the spiritual aspiration of Neptune. At other times I can lose myself in dance which I also consider to be a positive, vital and creative (Sun in Leo) example of a release of the energy of this Efficiency triangle.

Details for the Cheshire Study Group can be found on Page 2.

MOTHER KNOWS BEST - help your Saturn to help the World ...

"Saturn symbolises the human drive for self preservation." Bruno and Louise Huber, *The Planets*

The Mothers Union has recently issued Ten Commandments to help us all live a wiser, more ecologically concerned lifestyle.

These recommendations show the wise side of Saturn - setting clear and sensible limits on our consuming. The Mothers Union, who recently announced these "Commandments", actively campaigns across the world for parents rights, international debt relief and an end to child poverty.

For more details visit <http://www.themothersunion.org>

"Mother is not Saturn, she merely fills the role of the child's own Saturn." Richard Llewellyn, *Conjunction Digest Vol. 3*

"Saturn helps us to become responsible and reliable as individuals. If we live within the rules and guidelines of society then we reap the benefits of feeling safe and secure." Joyce Hopewell, from *Saturn Millstone or Mentor* in *The Synthesist* www.psavalon.com/psajournals.html

The TEN COMMANDMENTS OR "YOU MUSTS"

Turn off televisions and other electrical equipment at the mains.

Use energy efficient light bulbs.

Use computers less.

Turn down central heating by one degree centigrade.

Reduce plane travel.

Use public transport.

Buy second-hand clothes and other goods.

Switch to ethically registered banks and investments.

Use local shops which stock Fairtrade, vegetarian and organic produce.

Re-use and recycle everything where possible.

Life Clock – Balance Point – Ego Planets – The Collective – The Moon’s Nodes – The Elements – The Houses – Aspect Patterns – Aspect Quadrilaterals – Conjunctions – The Planets – Psychosynthesis – The Five Levels of the Chart – Chart Structure – Chart Images – Colour Balance – Astrolog – Blocked-Off Planets – Counselling – Small Aspect Patterns – Threefold Personality ...

The Editor Recommends... CONJUNCTION DIGESTS

When I took on the role of Editor one of the first things I did was to obtain copies of Conjunction Digest from the API (UK) Bookshop. Priced at £9 each, there are three volumes available.

They are a great supplement to the course materials, and the short ‘bites’ make them easily digestible. As a student I have found items that are relevant and really useful for each module of the course. I wish I’d had them earlier!

The articles have been selected from 34 previous editions of Conjunction. They have something for beginner and experienced astrologer alike and include:

- Writing by Bruno, Louise and Michael Huber, Richard Llewellyn, Joyce Hopewell and many of your course tutors.
- Student contributions – including examples of course work.
- Astrological Portraits/ Interpretations and discussion of consultations by experienced Huber astrologers
- Items from *Astrolog* the magazine of API (Switzerland)

NOTICE TO ALL MEMBERS OF API (UK)

At a recent API (UK) Council Meeting it was decided that future notices of AGM’s and EGM’s will, whenever possible, be sent by email. This is in the interests of economy and the environment. Elly, our Membership Secretary obviously needs to collect as many email addresses as she can in order to make this a reality! If you have an email address that she should have, new or changed, please can you email it to Elly at api.enquiries@btopenworld.com

CONGRATULATIONS

to these students, who have successfully completed the Intermediate Foundation Course Certificate:

Hazel Abel

Elise Kennedy (USA) with Credit

Michael Lodge

NETWORKING

A new student who will be happy to hear from you...

Janet Thomson, Studio 89, 105 London Street, Reading, RG1 4QD

email jansuzi@yahoo.co.uk

SUGGEST A CHART!

If you visit www.joycehopewell.blogspot.com (our Principal’s blog) you will see a number of chart interpretations.

Would you like to suggest a chart for Joyce to look at, using the Huber Method?

She can’t promise to look at every chart suggested because she needs be interested in the person too, in order to be inspired to write about them! But would definitely welcome suggestions of whose charts you’d like to see.

It’s always more difficult to get correct birth times for people in the news, but she does have full data for a couple of well-known and prominent politicians up her sleeve and is just waiting for them to do or say something interesting and hit the headlines! Joyce’s email address is on page 2.

API (UK) BOOKSHOP books, booklets CD’s, audio tapes

If you would like details of our new and second-hand books, booklets, tapes, CDs and learning material please contact Linda Tinsley for a current catalogue

70 Kensington Road, Southport, PR9 0RY
tel: +44(0)1704-544652
email: lucindatinsley@tiscali.co.uk

You can s

**For details of the available titles visit our web site:
www.api-uk.org
where you can also print off an order form**

API CHART DATA SERVICE

A comprehensive range of data and charts on paper or acetate produced to a very high standard using Megastar Software



Contact Richard Llewellyn
PO Box 29, Upton, Wirral, CH4 3BG
Tel: +44(0)151 606 8551
email: r.llewellyn@btinternet.com

**Natal House & Node Charts + Click – Integration
– Dynamic Quadrants – Transits – Progressions
– Personal Rays – Relationship Charts ...**